



香港聖公會福利協會

HONG KONG SHENG KUNG HUI WELFARE COUNCIL

Joyard

Hung Hom Transitional Housing Project

5-6/F, No.1 Dyer Avenue, Hung Hom, Kowloon



HOUSING BUREAU
TRANSITIONAL HOUSING



聖公會聖匠堂社區中心
S. K. H. HOLY CARPENTER CHURCH
COMMUNITY CENTRE

Content

01

Introduction

02

Excellent Location with Well-Developed Community Facilities

03

04

Comfortable Layout & All-Rounded Services

05

06

Eligibility Criteria & Application Methods

Introduction

The Hong Kong Sheng Kung Hui Welfare Council Limited (hereinafter referred to as "the Welfare Council") has received government funding support to renovate the 5th and 6th floors of the Sheng Kung Hui Holy Carpenter Church Building into "Joyard", providing 18 transitional housing units. These units aim to provide transitional housing and support services to single individuals (low-income youth, elderly individuals living alone, and others) receiving comprehensive social assistance, as well as grassroots families.

The Welfare Council will also provide social services to residents and encourage active participation in activities, aiming to build a caring, supportive, and an inclusive small community that comprehensively supports residents' physical, mental, and spiritual needs.

Features

Excellent location with well-developed community facilities

Comfortable layout

Affordable rent












All-rounded services with support of social workers

Excellent Location with Well-Developed Community Facilities

Superb location, just a 5-minute walk to Whampoa MTR Station, and adjacent to well-developed community facilities, catering the needs of residents.



LEGEND

- | | | | |
|--|-------------|---|---------------|
|  | MTR Station |  | Park |
|  | Bus Stop |  | Post Office |
|  | School |  | Laundry |
|  | Market |  | Shopping Mall |
|  | Library |  | Cinema |
|  | Playground | | |

Nearby Public Transport

KMB Buses

2E, 3B, 5C, 5D, 6F, 7B, 8, 8A, 11K, 12A, 15, 21, 30X, 41, 45, 85C, 212, 297, 230X, 268B, 269B

Minibuses

- 6 (From Whampoa Garden to Han Kowloon Road, Tsim Sha Tsui)
 8 (From Oi Man Estate to Han Kowloon Road, Tsim Sha Tsui)
 2 (From Whampoa Garden to Festival Walk)
 13 (From Hung Hom Ferry Pier to Broadcast Drive)

Cross Harbour Tunnel Routes
106, 115

MTR
Exit A, Whampoa Station

Comfortable Layout

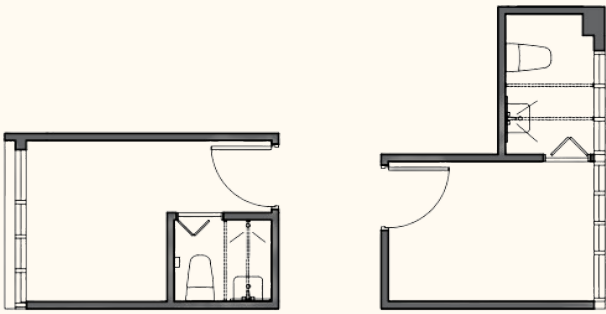
UNITS AND RENTAL PRICES

- The rental price includes land rent, rates, and management fees.
- Tenants are required to pay a deposit equal to one month's rent.
- Tenants are responsible for 50% of the stamp duty.
- Each unit is equipped with separate water and electricity meters, and charges are based on meter readings.

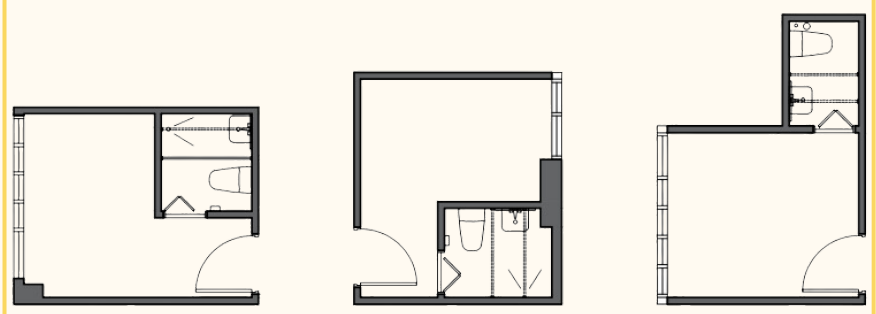
PROFESSIONAL DESIGN AND WELL-EQUIPPED FACILITIES

- Each unit is equipped with window-type air conditioning, storage water heater, bed, windows, private bathroom, and power outlets.
- The building features elevators, a shared kitchen, and 24-hour security services.

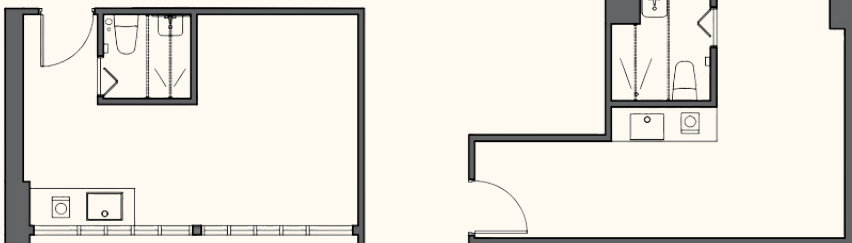
A 1-Person Unit 【Quantity: 4】
Approximately 81 square feet
to 86 square feet
\$2,515



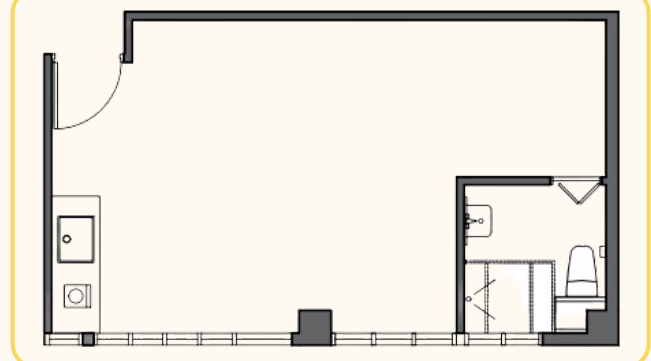
B 2-Person Unit 【Quantity: 9】
Approximately 94 square feet to
106 square feet
\$4,440



C 3-4-Person Unit 【Quantity: 3】
Approximately 194 square feet
to 196 square feet
\$5,330



D 4-5-Person Unit 【Quantity: 2】
Approximately 288 square feet
\$6,005



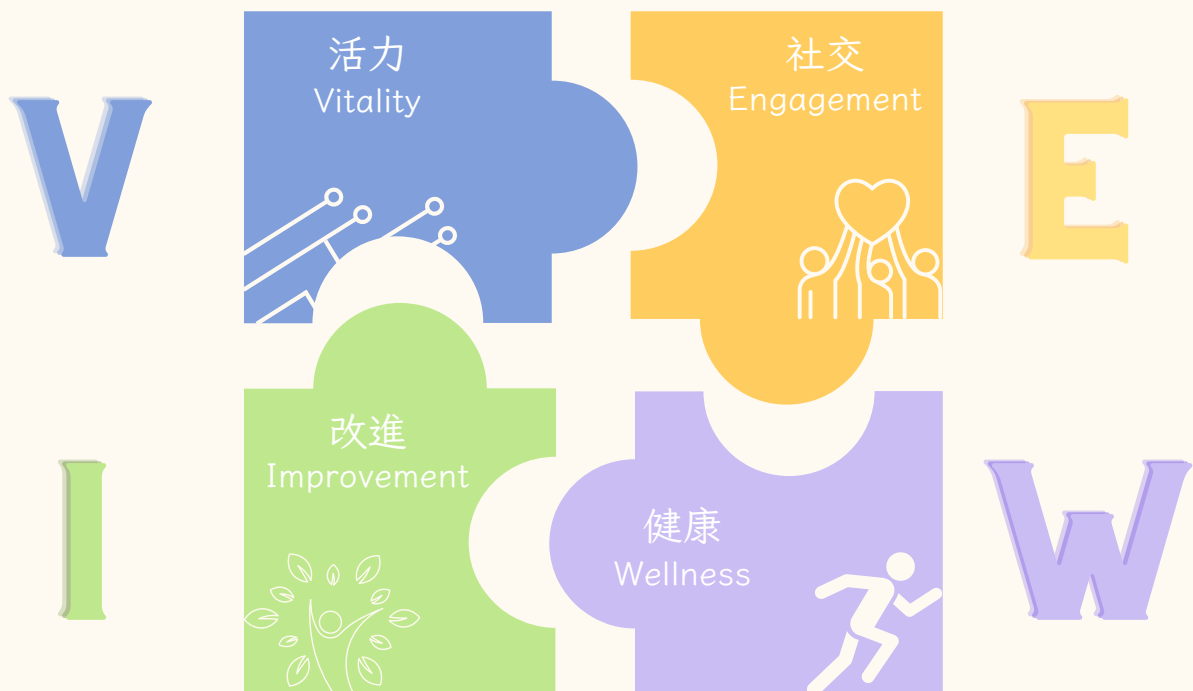
All-Rounded Services

“VIEW” SERVICE MODEL & SUPPORT

This project is overseen by dedicated social workers who focus on four major wellness indicators to cultivate and develop the residents' needs in terms of health awareness, community participation, environmental protection, financial management, and vocational guidance.

- Community Exploration
- Whole Person Development
- Vocational Guidance

- Neighborhood Mutual Support
- Festival Activities
- Volunteer Training



- Environmental Protection
- Home Safety
- Financial Management and Savings Education

- Promotion of Healthy Lifestyle
- Stress and Emotion Management
- Mental Health Support

Eligibility Criteria

Eligibility Criteria

Type A Applicant

(Allocate not less than 80% of the units)

The applicant who has been on the application waiting list for public rental housing for not less than 3 years*, or

Type B Applicant

(Allocate not more than 20% of the units)

The applicant has been living in inadequate housing conditions or with imminent housing needs*

*For details, please refer to the application guide.

The initial period of stay is two years.



Application
Guide

Applications are accepted
starting from today.
Limited availability.

 Enquiry Hotline : 3960 4357

Monday to Friday 10:00 AM to 1:00 PM & 2:00 PM to 5:00 PM

Except on public holidays.




Application Methods

- Applicants can through the "TH-E" — Central and Unified Platform for Transitional Housing.

[Project Code: 38]

<https://thapplication.hb.gov.hk/th/Step0?lang=tc>

- Or Applicants may submit the application form through any of the following means:

Option 1	 <p>by post to the “Task Force on Transitional Housing, Housing Bureau, P.O. Box 183, General Post Office” with “Application for Transitional Housing” marked on the envelope</p>
Option 2	 <p>by fax to 3565 4382</p>
Option 3	 <p>by email to thapp@hb.gov.hk</p>
Option 4	<p>by submitting the application form into the collection box at the Hong Kong Housing Authority Customer Service Centre</p>

Remarks: : Operating organisations will not receive the application form directly

5-6/F, No.1 Dyer Avenue,
Hung Hom, Kowloon

 Enquiry Hotline : 3960 4357

Monday to Friday 10:00 AM to 1:00 PM & 2:00 PM to 5:00 PM
Except on public holidays.

Email : hc_application@skhwc.org.hk

Website : <https://www.skhwc.org.hk/zh-hant/>
<http://hccss.holycarpenter.org.hk/>

Joyard
Application Guide: FAQ



Website of S.K.H.
Holy Carpenter
Church Community
Centre



Website of Hong Kong
Sheng Kung Hui
Welfare Council Limited



Website of the Task Force
on Transitional Housing
under the Housing Bureau



Supervisor: Ms Esther Wong Chui Yan,
Assistant Director

First edition: 12/2023 with 1,000 copies